



AI Robotics Infrastructure for Autonomous Meal Supply

Feeding Humanity autonomously. Scaling industrially.



Circus is a Global IP Leader in Military and Civilian AI Robotic Systems

Inventor of AI robotics nutrition systems – building embodied robotic systems to bring AI into physical world services. High volume production active.

36

Patents in AI robotics

6k

Unit production capacity p.a.

>500

Contracted Orders to date

CA1

Xetra listed since early '24

~85

AI robotics experts team*

2021

Founded; German based HQ/ R&D



AI Robotics Infrastructure System for Autonomous Meal Supply in Urban Areas – Serial Production live

CA-1

Developed to advance high-quality meal accessibility and remove labor dependency while reducing footprint and waste.

Meals produced
per day

~800

Daily human
interaction

<1h

Required
ground space

7qm



REWE RETAIL

Launch Event – Nov. 25

fresh&smart

REWE

Abholung
Bitte wählen Sie die gewünschte
Portion



TMRW ■ HERE





CIRCUS GROUP Meta

META (GERMAN HQ)

Launch Event – Oct. 25



Enterprise Growth with Overwhelming Demand – +500 Contracted Orders and +8,000 AI Robotic Systems under MoU

RETAIL	CARE	EDUCATION	INDUSTRY
			
Offering robot-made meals at price point -60% compared to market.	Meal supply for employees and visitors; servicing 1,600 hospitals.	Full office integration to cater employees; replacing canteen.	Autonomous meal service for factory workers 24/7 at high quality
16,000 locations total	Serving 1,600 hospitals.	Over 73,000 employees	175,000 employees

Lighthouse customers fueling commercial growth – client selection:

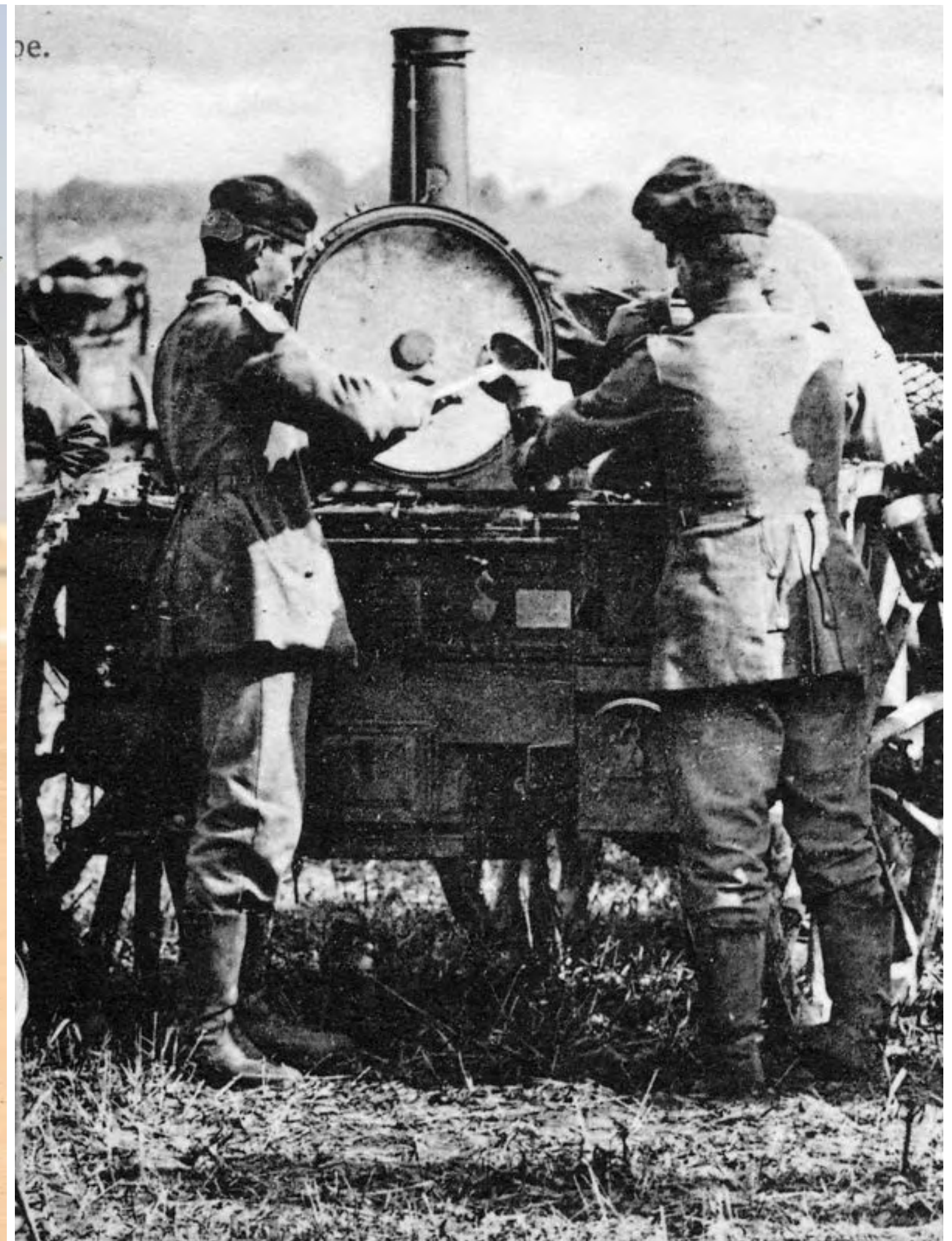


+30



THE STATUS QUO

Traditional field kitchen

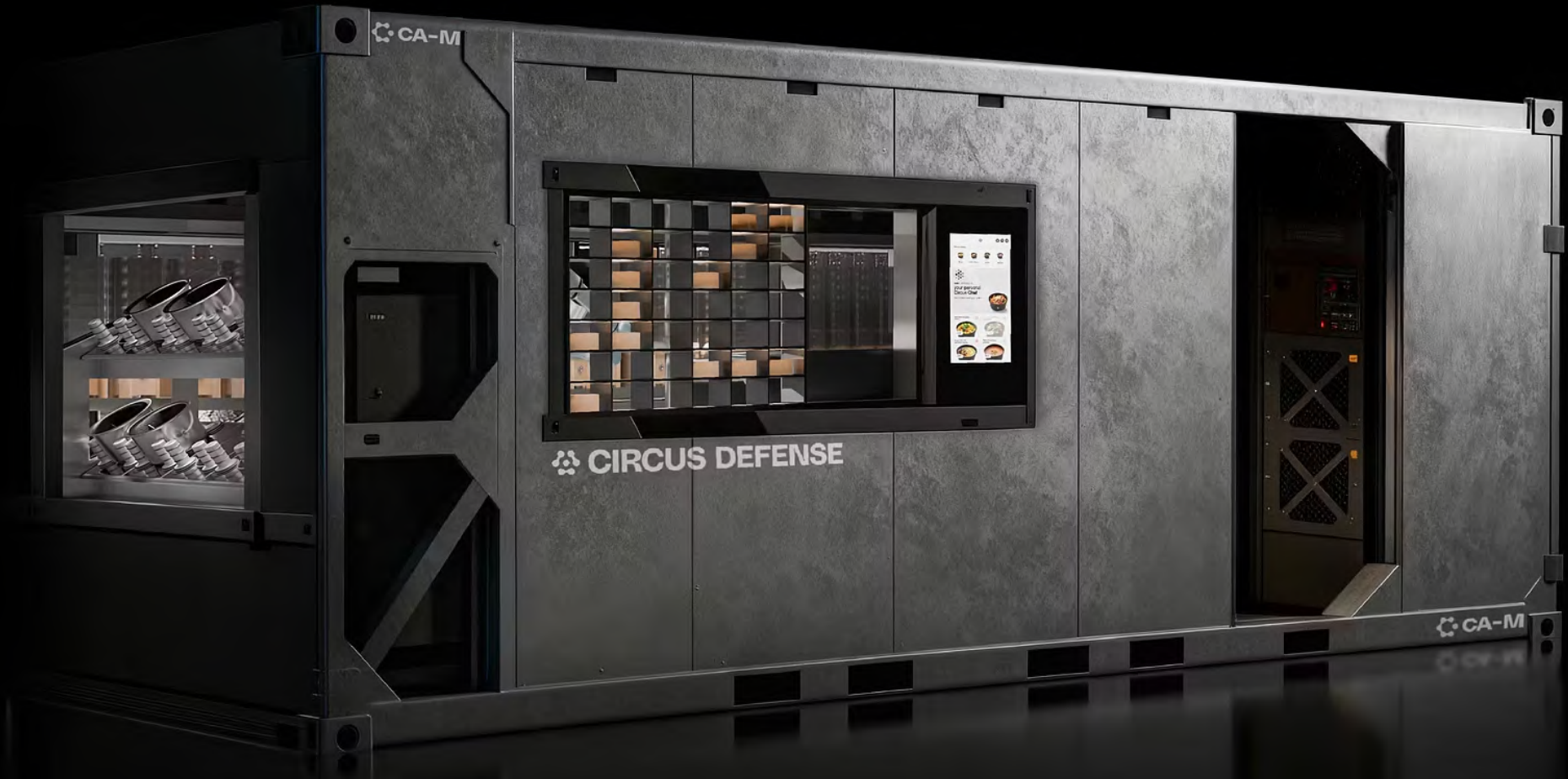


Unmanned AI-robotics System for Autonomous Troop Supply – Feeding Ground Forces

CA-M

Build at the fraction of cost compared to manual field kitchens at near-zero human risk exposure due to robotics and AI control.

	CA-M	FIELD KITCHEN
Meals produced per day	~2k	~1k
On ground set up time	30min	>5h
Military personnel required (FTE)	0.5	8-10



CA-M System Engineered for Full Autonomy in High-Risk and Off-Grid Environments with Minimal Personnel and Infrastructure

CA-M (Series 1) Features:



NUTRITION AMMUNITION

Standardized ingredient silos enable rapid resupply, hygienic handling, and modular exchange.



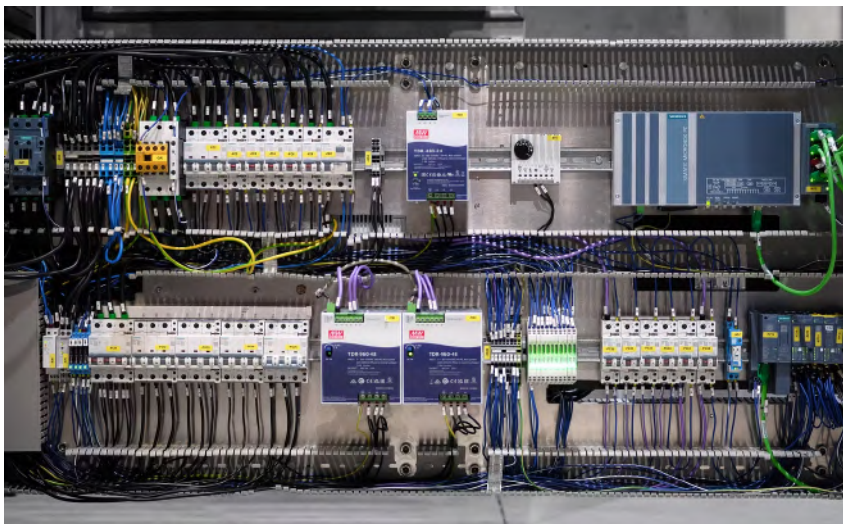
AIR DROPPABLE

Containerized design and reduced weight profile allow rapid air deployment and setup.



DRONE PORT

Integrated docking and data interfaces enable autonomous coordination with UAV and UGV resupply networks.




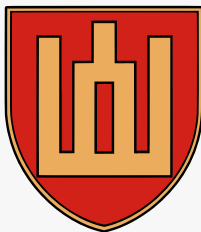


OFF GRID USE

Self-sustaining power, local AI compute, and water systems ensure full operational capability independent of local infrastructure.



Clear deployment plan with client focus on European forces and NATO allies – initially centered on barrack infrastructure integration and remote training facilities

			
Brave 1 (Ukraine)	3rd Assault Brigade (Ukraine)	German Armed Forces	Lithuanian Armed Forces
Framework agreement with Government-program by the Ukrainian forces and Ministry of Defence.	Brigade of Ukrainian Ground Forces known for its offensive operations and effectiveness.	180,000-strong armed force backed by over €50 billion in annual defence spending.	NATO ally committed to deterrence and the defense of Europe’s eastern flank.
Integration of systems in remote training camps and underground facilities.	Deployment at attack training centres and remote locations.	Integration in barrack infrastructure for on troops and training facilities.	Integration into barrack infrastructure and NATO training scenarios.
network >200 locations	+20,000 soldiers	>200,000 soldiers total	>80,000 soldiers

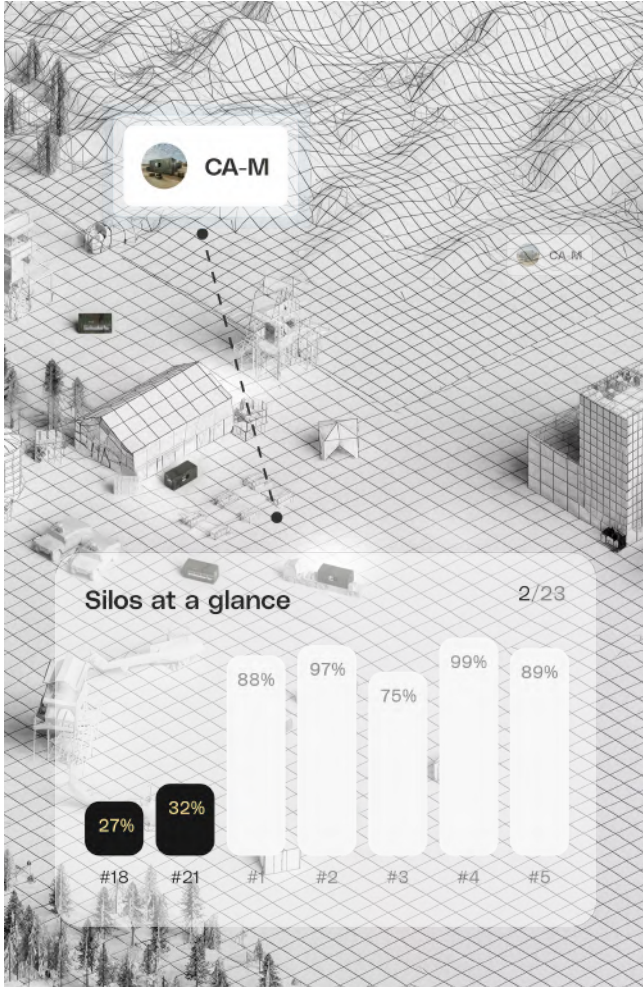


Maximus OS – A central AI-powered Operational System to Control every Data point and Interaction Guided by Agentic AI



HYBRID INTERFACE

Proprietary POS for dynamic offer adaptation and pricing intelligence.



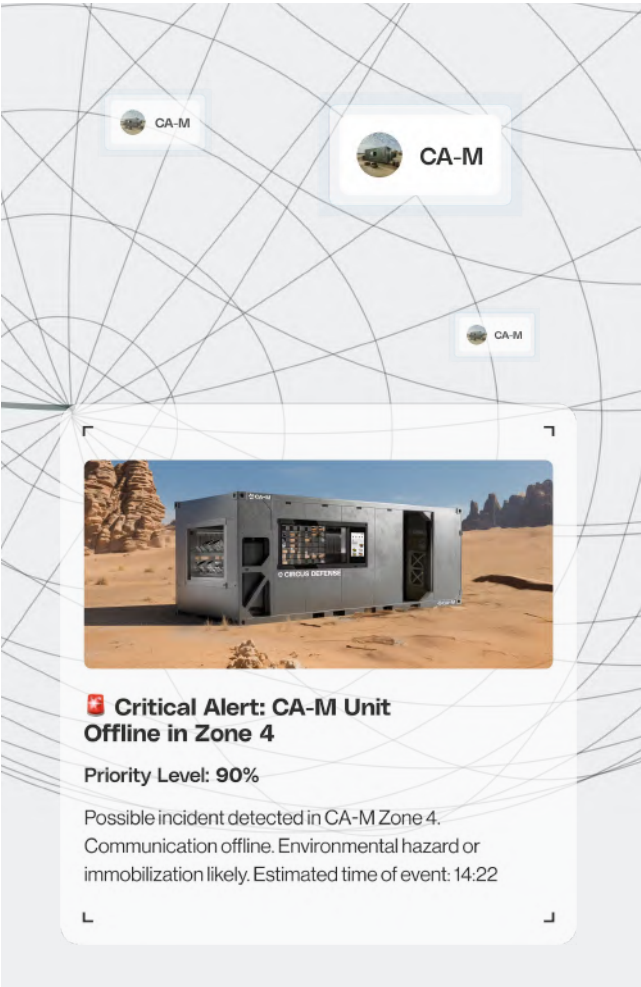
ROBOT CONSOLE

AI command hub for fleet-monitoring, diagnostics, and predictive performance.



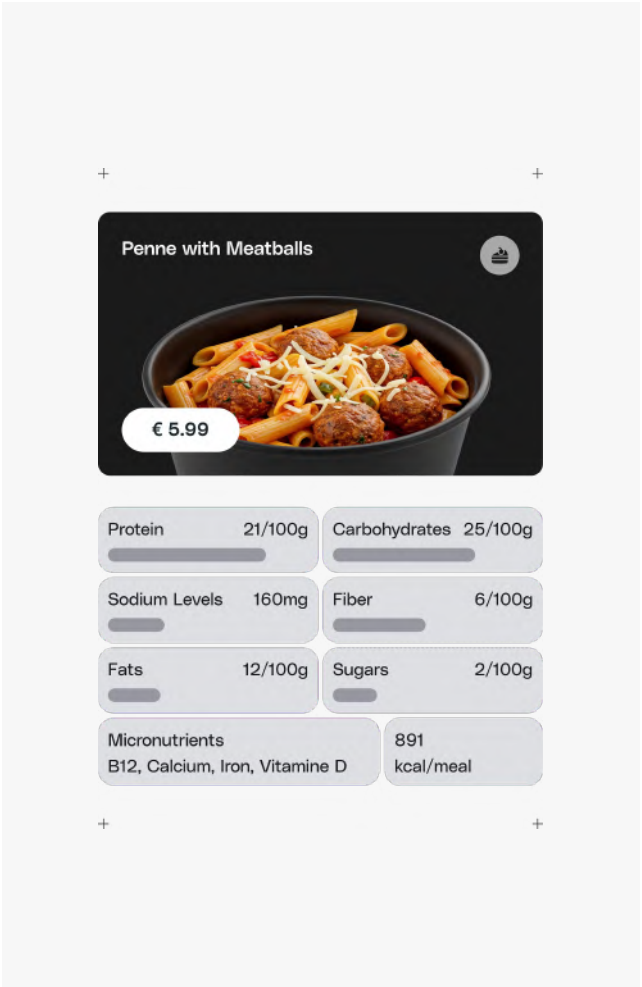
PIM (Supply Chain)

Demand and waste AI prediction engine optimizing usage in real time.



OPS AI AGENT

Agentic AI co-pilot for decision-making, incident detection.



CULINARY AI

Adaptive AI engine translating ingredient data into nutritional actions.





Tarus AI – Proprietary Multi-Modal AI Command Stack Powering Central Robotic Intelligence



Edge Perception & Visual Intelligence Layer

- Circus Visual Intelligence (CVI) object detection for bowls, tools, ingredients, hazards **powered by NVIDIA Jetson** for multi-camera edge processing
- Live anomaly detection & alerting via NVIDIA Metropolis fed to command model. **45,000+ hours** of structured camera footage used to continuously self-improve perception models-

Proprietary large-action-model (LAM)

- Trained on **multi-modal fleet logs**: millions of robot-arm motion primitives, kinematics, tool interactions, and perception outputs.
- Leverages **synthetic demonstrations** to expand training data for grasping, trajectory planning, and recipe-based action sequencing.

Digital Twin & Simulation Engine

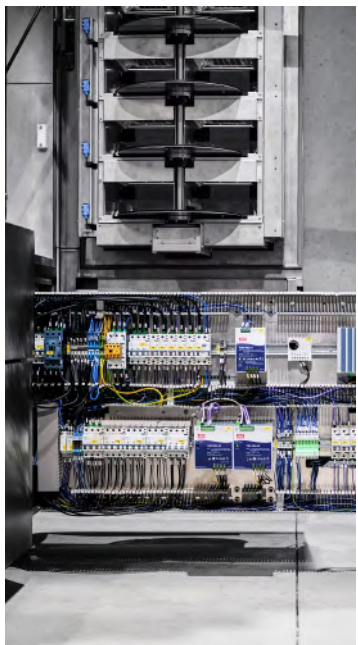
- Uses **full CA-1 digital twin datasets** (arm geometry, workspace topology, ingredient properties) to simulate tasks and create domain-randomized training data.
- Generates **synthetic edge cases** to augment real-world data and validate new behaviors pre-deployment.

Leveraging our Modular AI Robotics Architecture to Grow our Product Portfolio – Core Systems Remain Across Applications



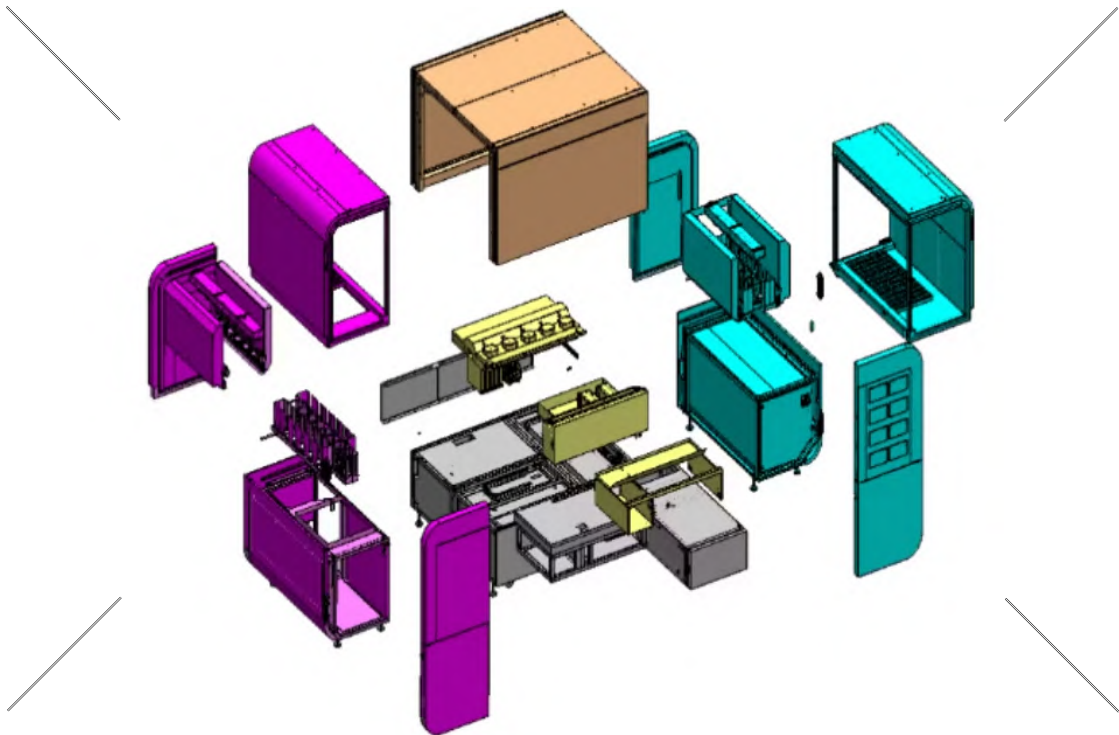
ROBOTIC CONTROL

Multi-axis motion control and adaptive grasping algorithms for human-like dexterity across robotic systems.



ELECTRICAL/ GPU

Proprietary electrical stack; local compute for real-time AI sensor fusion, and decision-making.



HYGIENE/ DISPENSING

Patented dispensing and self-cleaning subsystems ensure full compliance with HACCP hygiene standards.



AI INDUCTION

Intelligent induction system dynamically adjusts thermal profiles through AI feedback loops.



Global partnership with Celestica designed for rapid high-volume production

North-american Celestica is a \$10B global leader in high-tech manufacturing and product lifecycle services for industries like, Automotive, and Aerospace.

- **Fully outsourced** assembly lines and global service/ maintenance network
- **Access to 40+ factories globally** across US, EU, and APAC totalling over 26,000+ employees

CIRCUS X CELESTICA – FACTORY 01:

80

Modular assembly
line stations

+150

Functional
System tests

17.4

Max. production
output per day



Circus Defence SE / Circus SE – XETRA: CA1.DE | OTC (ADR): CCUSY



Circus will Focus on Defence Deployment Growth, Launch of European High-Volume Production and Product Portfolio Expansion

Building an European defence leader for embodied AI infrastructure systems.



UKRAINE DEPLOYMENT

Military go-to-market with core focus on European armed forces and active conflict zones.



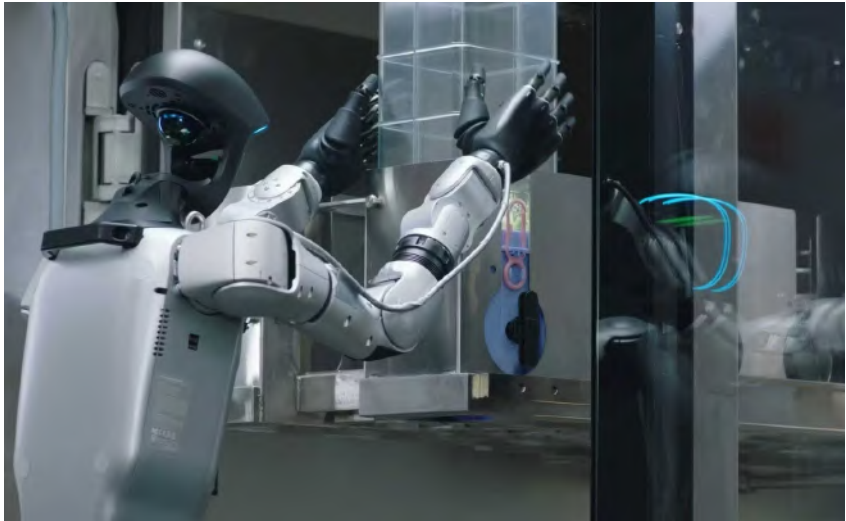
SCALING PRODUCTION

Bringing production to Europe to accelerate defence deployments and production cycle time.



BEYOND NUTRITION

Expansion of product portfolio to autonomous logistics systems and AI multi-drone hubs.



PHYSICAL AI NETWORK

Growing ecosystem intelligence and integration of embodied systems to reach full autonomy across infrastructure services.



Guidance: Clear Path to Profitable Growth in Defence and Civilian Sector

Driven by High-Volume Production and Deployment Acceleration

2026

Net Revenue
(in EUR)

44-55M

ARR
(in EUR)

>20M

EBITDA

Negative





IR@CIRCUS-GROUP.COM

CIRCUS-GROUP.COM – CIRCUS-DEFENCE.AI